

# Delta Wing Gazette



G W R R A R E G I O N H A R K A N S A S D I S T R I C T C H A P T E R W

## CHAPTER DIRECTORS

Well, if the weather would cooperate we might be able to do some good riding! We were not able to attend Rider Ed weekend this year because Bryan had to work. But I hope those that went had a really good time.

I have some sad news! For those of you who do not know, our mascot, Wolfey has been "kidnapped". He was last seen sitting on a pig at Big Butts. Bryan is going to make us a Missing persons poster and we will post it at Big Butts to see if he returns.

Don't forget we will have our May gathering while we are at Toad Suck park in Conway on the 21<sup>st</sup>. Chapter L is having their convention that day and we would like to go and show our support to them by attending their convention. Please try to make plans to attend as this will be our LAST gathering BEFORE the Arkansas District Convention.

Also, let's remember Bobby Stabbs in our thoughts. He was on vacation in Alabama last month when he became ill. He has had to have some surgery and is doing better. But he will have a long road of recovery ahead of him.

I hope to see everyone on the 21<sup>st</sup> and I also hope to see several of our members attend the district convention this year. Remember, you can't have a good time unless you PARTICIPATE!!!!



**Bryan & Emily Dunham**

**Chapter Directors 2011**

**District Couple of the Year 2010-2011**

**(870) 278-5530**

**(870) 623-9091**





# Wing Wisdom Whittles

April 2011



PREPARED BY STEVE &  
CAROLYN COTTON, REGION  
H TRAINERS



“Whittles” articles are intended to provide information that can be presented by chapter members at monthly gatherings to help promote

## Do It Gradually

Are you an “all or nothing” sort of person, or can you do things gradually? Weight lifters start with weights they can lift, and gradually increase the weight over a period of time. Improving a little bit each day, no matter how tiny that progress may seem, will take you to your goal. The key is gradual forward progress.

Pavlov, the king of stimulus-response thinking, was asked to give one last piece of advice for his students from his deathbed. His answer was, “Passion and Gradualness”. That seems like very memorable, appropriate advice. If you are involved in projects, careers, and relationships that you are passionate about and you purposefully build them gradually, you will reach your objectives and reap the benefits. When you reach a plateau after developing a high degree of skill, or after working intensely at something, it is often wise to drop back a little and allow for some balance. When things feel like a strain and results are not forthcoming, that sense of difficulty and effort can displace the passion you once had. There is wisdom in stepping back in this scenario before you move forward again.

Continue to build on your own success patterns. You have all had successes in your life. Go back in your memory and re-live those experiences. In your imagination, revive the entire picture in as much detail as you can. Visualize all of the little incidental things that helped you on your way to that success. Remember all of the details – the feelings, the activities, the colors, the surroundings, the excitement, and the path. Use all of your senses to make those positive memories come alive. Then, use those memories to picture yourself successfully, and make your goals a reality. Clearly visualize the outcome, perfect in every detail. Be creative! It beats worrying...and it works!

Now, the final step is how to apply this concept. In some cases, we can lead by example. Watch for people “doing things right” to build confidence in your GWRRA family. Mentor and coach leaders to help people achieve gradually increasing successes as they target people for helping with projects or responsibilities in the chapter or district. Most of us can relate to the feeling of fear and success. We have also watched Members of our GWRRA family blossom and grow as they try new things in a fun and supportive environment. Remember those memories and feelings as you work with others, and you’ll continue to make a difference!

## SAFETY



**We have talked about this one before but considering the weather lately it doesn't hurt to refresh.**

**Lightning** is the MOST UNDERRATED weather hazard. On average, only floods kill more people. Lightning is most often seen in thunderstorms. In fact, lightning is what makes thunderstorms. Lightning makes every single thunderstorm a potential killer. Forecasting when and where lightning will strike is not yet possible and most likely never will be.

In the United States, lightning routinely kills more people each year than tornadoes or hurricanes. Only lightning can strike outside the storm itself, and is the first thunderstorm hazard to arrive and the last to leave and knows no boundaries.

Since lightning is so unpredictable no one can guarantee an individual or group absolute protection from lightning. However, knowing and following proven lightning safety guidelines can greatly reduce the risk of injury or death.

While no place is 100% safe from lightning, some places are much safer than others. Buildings that are NOT SAFE (even if they are "grounded") have exposed openings. Convertible vehicles offer no safety from lightning, even if the top is "up". Other vehicles, which are NOT SAFE during lightning storms, are those which have open cabs, such as golf carts, tractors, and construction equipment.

The safest location during a thunderstorm is inside a large enclosed structure with plumbing and electrical wiring. If lightning strikes the building, the plumbing and wiring will conduct the electricity better than a human body. If you are using any electrical appliances or plumbing fixtures (INCLUDING telephones and computers), and a storm is overhead, you are putting yourself at risk! If no buildings are available, then an enclosed metal vehicle such as an automobile, van, or school bus makes a decent alternative. If you are inside a vehicle, put the windows up, and avoid contact with any conducting paths leading to the outside of the vehicle.

Lightning can strike as far as 10 miles from the area where it is raining and many people are unaware of how far lightning can strike from its parent thunderstorm. If you can hear thunder, you are within striking distance. Seek safe shelter immediately. Remember this lightning safety rule...**When thunder roars, go indoors** and stay there until 30 minutes after the last clap of thunder. DON'T wait for the rain to start before seeking shelter, and don't leave shelter just because the rain has ended.

There is **NO SAFE PLACE outdoors** during a lightning storm. If stuck outdoors on a highway, you *could* find a highway overpass and park the bike and get as high as possible from the road, high enough to be out of any water, on the embankment between the highway and the bottom of the bridge. At the same time, do not touch the metal of the bridge. You are trying to get away from metal and water conductors.

Lightning can be as hot as **54,000°F** (30,000°C), a temperature that is five times the surface of the sun! Water and metal are excellent conductors of electricity. The current from a lightning flash will easily travel for long distances. The average lightning bolt carries about **30,000 amps** of charge, has **100 million volts** of electric potential. These amounts can burn through ANY insulator (even the ceramic insulators on power lines!) Besides, the lightning bolt may just have traveled many miles through the atmosphere, which itself is a good insulator.

Don Francisco

IL-A

## The Big Bad Wolf



### MISSING

Help there has been a mistake in identity!! I belong to GWRRA Chapter W in Blytheville. I have ridden 60,000 + miles on the back of a Goldwing. I was last seen at Big Butts in Leachville on a pig. I was turned in at the counter but then I must have looked like someone else because a man claimed me. Whomever took me PLEASE return me to Chapter W. No

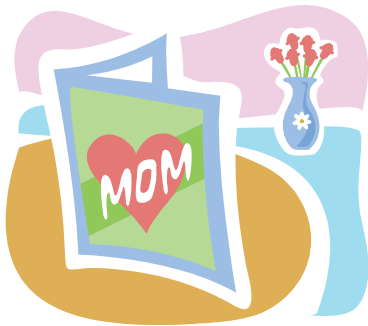
questions ask just leave me on the pig, drop me at the counter or call any of the following numbers. I miss my chapter and I want to go home!!

Bryan & Emily Dunham  
870-278-5530

Johnny & Mildred  
Glasscock 870-623-4578

Larry & Marsha Smith  
870-623-2702

Jimmy Smith  
870-623-1036



*HAPPY BIRTHDAY*

Wesley Jones May 15

*ANNIVERSARIES*

*none*

*GWRRA JOIN DATE*

Johnny Glasscock & Mildred Glascock 05/16/06

Thomas Dean 05/16/06

Larry & Marsh Smith 05/24/06

NEW MEETING TIME &  
PLACE!!!

*GWRRR Chapter W-Blytheville  
Delta Wings  
Meets the 3<sup>rd</sup> Saturday of the Month  
At Plum Point Inn & Restaurant  
On Highway 140 in Osceola*

## MEC-MEMBERSHIP AND RECRUITMENT COORDINATOR



We hope that all our GWRRR family/friends are all well at this time. These storms have been awful, hopefully if there has been damage it is all minor. If there is anything that we can help with anything please call, email, or text. Hope Bobby is feeling better and will be home soon. Please keep us informed on your progress, we didn't even know you had any problems. For anyone that didn't know, Bobby & Theresa went to visit family and Bobby got ill.

April is over-hopefully the showers will go out with the month. May has begun and so has our rally season. Chapter H's rally was the beginning our rally rides. They had a good turn out even with all the rain. It was really nice to see so many of our friends. Mark your calendar for all the upcoming events, let's get out and ride. The competition is on; Chapter W has attended multiply events already and had our mark put on the "Spirit Stick". There are a few chapters that have more marks than us but we are not far behind, let's continue to participate and see how many we can get.

Chapter P's rally was a success. We started out with several bikes to go but it started raining AGAIN, some turned around and came on back home. Some of if continued and it turned out to be a very nice day to ride. I'm glad we went after we got there and sure missed everyone that had gotten up so early to go.

Chapter C is doing seminars before their monthly gatherings. We have tried this in the past and didn't get much participation but if you are interested in attempting this again please let us know. We have 3 seminar instructors in our chapter so there is no reason that we are not doing more education.

Remember Arkansas District convention is at the end of May in Rogers. There are several organized rides planned along with lots of FUN. THE TALENT SHOW IS BACK!!! I hope that someone from the chapter show your talent whether it is, serious or funny. I know of one chapter that is prepared to participate in the fun. I know the chapter has worked hard on our chapter basket. I'm excited to see the finished basket. Let's make this the best district convention with participation!! We are going to summit our chapter banner and scrape book into competition.

Remember May it Motorist Awareness Month!!

**FRIENDS FOR FUN, SAFETY AND KNOWLEDGE**

Mildred Glasscock

# From your **ARKANSAS**



## District Directors

Well, it appears that May has made it and all is under way, two major Rallies behind us and many more to come. Of course we do not want any of you to forget the one coming up at the end of the month in Rogers AR. You can find out all about it in the Rally section of the District Newsletter.



We had a good turnout at the OCP in Morrilton and want to encourage those that could not attend to keep their eye on the calendar for the next meeting. I promise you that you will enjoy the program and learn from

it.

Our Region has sprung into the rally season with a great rally in Louisiana and next weekend (May 6-8) Texas will have their rally in Killeen, we are looking forward to visiting with all in Texas.

Pam and I would like to take a minute to let you know that the OCP has changed our mindset and that we have learned several valuable lessons about the GWRRA and it's members and we are going to do our best to move toward the goals that the program has brought out in us. We would like to start by letting each of you (those in our District and without) know how much we appreciate what you do for this organization. We succeed because of the efforts that are put forth by the members, so each one of us have a very important part of making the association what it is. **THANK YOU!!**

We are looking forward to seeing all of you as this month unfolds. Please be safe and be cautious.

Remember,

If it looks like a good day to ride,  
it probably is.

Chris and Pam DePriest

# ARKANSAS

## DISTRICT STAFF

### **District Directors**

Chris & Pam DePriest  
130 George Nic Road  
Beebe, AR 72012  
[director@argwrra.org](mailto:director@argwrra.org)  
(501) 882-9172

### **District Educators**

Jim & Bonita Goodman  
55 Eastland County Cove  
Ward, AR 72176  
[educator@argwrra.org](mailto:educator@argwrra.org)  
(501) 743-8901

### **District Trainers**

Larry & Brenda Penepent  
818 Sparksford Drive  
Russellville, AR 75802  
[trainer@argwrra.org](mailto:trainer@argwrra.org)  
(479) 858-7188

### **District Webmasters**

Bill & Belinda Shryock  
5959 Glenwood Drive  
Benton, AR 72019  
[webmaster@argwrra.org](mailto:webmaster@argwrra.org)  
(501) 940-1933

### **Assistant District Directors**

Ken & Rhonda Holmes  
222 Chateau Drive  
Dover, AR 72837  
[asst\\_director@argwrra.org](mailto:asst_director@argwrra.org)  
(479) 968-5179

### **District Treasurer**

Connie Brandon  
13682 West Highway 72  
Hiwasee, AR 72739  
[treasurer@argwrra.org](mailto:treasurer@argwrra.org)  
(479) 685-2268

### **District COY**

**District Ambassadors**  
Bryan & Emily Dunham  
3602 North County Rd 729  
Blytheville, AR 72315  
[district\\_couple@argwrra.org](mailto:district_couple@argwrra.org)  
(870) 278-5530 Bryan  
(870) 623-9091 Emily

### **Assistant District Directors**

Johnny & Mildred  
Glasscock  
1109 S. Parkside  
Blytheville, AR 72315  
[johnnywg@swbell.net](mailto:johnnywg@swbell.net)  
(870) 623-5348

## **By the Book**

**By: Steve Cotton  
Region H Trainer**

*The "By the Book" articles are intended to help familiarize GWRRA Volunteer Leaders and Members with the policies, procedures, and information contained in the GWRRA Officer's Handbook (OHB). A copy of the Officer's Handbook can be found at [www.gwrro.org](http://www.gwrro.org) - Click on the Officer Connection tab at the bottom of the page; then select Officer's Handbook in the upper right hand corner. Please feel free to re-print these articles in Region, District, or Chapter newsletters.*

*Thanks to Harry Dollarhide (former Region H Trainer, and current Region H Director) for the inspiration to write this month's article based on ideas he wrote in July 2005. Revisions have been made to keep it current.*

## **Be a part of the TEAM**

**One of the essential keys to the success of GWRRA is – TEAMWORK. Since GWRRA is so large, complex and diverse, no single person can accomplish it all. We must all focus our special skills and talents on a portion of the task at hand. This piece-by-piece, component-by-component approach requires a significant amount of dependency. Being a TEAM player allows us to take those pieces and mold them into an effective organization. Note that the pages in the Officers Handbook relating to TEAMWORK are most of Section C – Structure and Organization!**

**At the International level of GWRRA, some of the major programs of the TEAM are Rider Education, Leadership Training, Member Enhancement, and Motorist Awareness. These programs all specialize in their respective areas, but are all a part of the TEAM concept. The National Directors lead their TEAMS under the guidance of the Deputy Directors and the Director of GWRRA. They strive to increase the membership base by creating an atmosphere that provides fun, promotes safety, heightens knowledge, and by offering a full range of desirable services and benefits for our Members.**

**At the Chapter level, the TEAM consists of the Officers and Members that work together for the success of the Chapter. At this level the TEAM includes the Officers: Chapter Director, Assistant Chapter Director(s), Rider Educator, Treasurer, and Member Enhancement, as well as other positions that are not Officers but are also essential elements of the TEAM. The Chapter Director guides this TEAM with input from other members of the TEAM and the Chapter as a whole.**

# By the Book

By: Steve Cotton  
Region H Trainer

*The "By the Book" articles are intended to help familiarize GWRRA Volunteer Leaders and Members with the policies, procedures, and information contained in the GWRRA Officer's Handbook (OHB). A copy of the Officer's Handbook can be found at [www.gwrro.org](http://www.gwrro.org) - Click on the Officer Connection tab at the bottom of the page; then select Officer's Handbook in the upper right hand corner. Please feel free to re-print these articles in Region, District, or Chapter newsletters.*

*Thanks to Harry Dollarhide (former Region H Trainer, and current Region H Director) for the inspiration to write this month's article based on ideas he wrote in July 2005. Revisions have been made to keep it current.*

## Page 2

**The Chapter Director's effectiveness is multiplied many times by the TEAM approach. The ability to manage large tasks is increased, and the chapter operation is streamlined and simplified through delegation of tasks. Further, the TEAM takes advantage of knowledge and expertise that may be available within the Chapter. Everyone shares the vision; they are on the same page; and they communicate. The additional benefit of this approach is the Chapter participants feel they are an integral part of the Chapter. As TEAM Members, they are "vested" in the Chapter, and not just innocent bystanders. No single person is trying to do everything, and thus is less likely to experience "burn out".**

**GWRRA has a rich history of TEAM effort. That TEAM effort is continuing today with new initiatives and enhancements being added on a regular basis to make things better for our Members.**

**We are all part of the GWRRA TEAM, whether an Officer or a Member participant. While the GWRRA core values serve us well, it is applying these core values through a TEAM effort that brings the biggest success. Working together, we will continue to ensure we remain the world's greatest Gold Wing Association.**

**Learn Something New...Then Teach Someone!**

**Steve and Carolyn Cotton  
Region H Trainers**

# GWRRRA Chapters in Arkansas

<i>CHAPTER</i>	<i>LOCATION</i>	<i>CONTACT /PHONE</i>	<i>MEETING DATE/ TIME</i>	<i>MEETING PLACE</i>
<i>AR-A</i>	<i>Little Rock</i>	<i>Pending</i>	<i>3rd Saturday Eat 8am Meet 9am</i>	<i>Frontier Diner, LR I-30 W frontage rd near Baseline</i>
<i>AR-B</i>	<i>Springdale</i>	<i>Frank &amp; Sharon Maxwell (479)855-2278</i>	<i>2nd Saturday Eat 9am Meet 10am</i>	<i>Golden Corral, Rogers I-540 Exit 81 Pleasant Grove Rd</i>
<i>AR-C</i>	<i>Cabot</i>	<i>Roy &amp; Georgia Dillinger (501)944-4705</i>	<i>1st Saturday Eat 9 am Meet 10 am</i>	<i>The Diner 3286 S. 2nd St #B Cabot</i>
<i>AR-D</i>	<i>Jonesboro</i>	<i>Pending</i>	<i>1st Sunday Eat 1:30 Meet 2:30</i>	<i>Western Sizzlin</i>
<i>AR-E</i>	<i>Hot Springs</i>	<i>Richard &amp; Jean Penuel (501)922-4185</i>	<i>4th Saturday Eat 9am Meet 10am</i>	<i>Hester's Restaurant Travel Lodge Grand &amp; Central</i>
<i>AR-H</i>	<i>Batesville</i>	<i>Tom &amp; Chris Wammack (870)307-8661</i>	<i>Varies, Please check latest Newsletter or Call</i>	
<i>AR-J</i>	<i>Russellville</i>	<i>Pending</i>	<i>1st Saturday Eat Noon Meet 1pm</i>	<i>Western Sizzlin 105 E Main-Hwy 64</i>
<i>AR-L</i>	<i>Conway</i>	<i>Bud &amp; Jan Danner (501)730-0827</i>	<i>3rd Saturday Eat 5pm Meet pm</i>	<i>Smitty's BBQ 740 Harkrider (Hwy 365)</i>
<i>AR-P</i>	<i>Mountain Home</i>	<i>John &amp; Susan Sparks (870)424-2529</i>	<i>3rd Saturday Eat 12pm Meet 1 pm</i>	<i>Western Sizzlin Mountain Home</i>
<i>AR-R</i>	<i>Van Buren</i>	<i>Garry &amp; Phyllis Floyd (479)474-1560</i>	<i>4th Saturday Eat 9am Meet 10am</i>	<i>Sister's Bistro 719 Main</i>
<i>AR-W</i>	<i>Blytheville</i>	<i>Bryan &amp; Emily Dunham (870)278-5530</i>	<i>3rd Saturday Eat 9 am Meet at 10 am</i>	<i>Plum Point Inn Osceola, AR</i>
<i>AR-X</i>	<i>Clarksville</i>	<i>Robert &amp; Paula Dolonski</i>	<i>4th Saturday Eat 5:00pm</i>	<i>Western Sizzlin Meet 6pm</i>

# May 2011

Sun	Mon	Tue	Wed	Thu	Fri	Sat
1	2	3	4	5	6	7
						Chapter P Convention Mountain Home
8	9	10	11	12	13	14
Mother's Day				Texas District Convention	Texas District Convention	Texas District Convention
15	16	17	18	19	20	21
Wesley Jones Birthday						Chapter W gathering  Chapter L convention Conway
22	23	24	25	26	27	28
				Arkansas District Convention	Arkansas District Convention	Arkansas District Convention
29	30	31				
	Memorial Day					